



CHAIN CONVEYORS

1247 FLORENCE RD. FLORENCE, ON. CANADA, N0P 1R0 Ph: 1.888.239.9713 Fx: 1.519.695.2529
<http://www.lambtonconveyor.com> email: sales@lambtonconveyor.com

China Branch: Ph: +86 371 67507165 Fx: +86 371 67993709



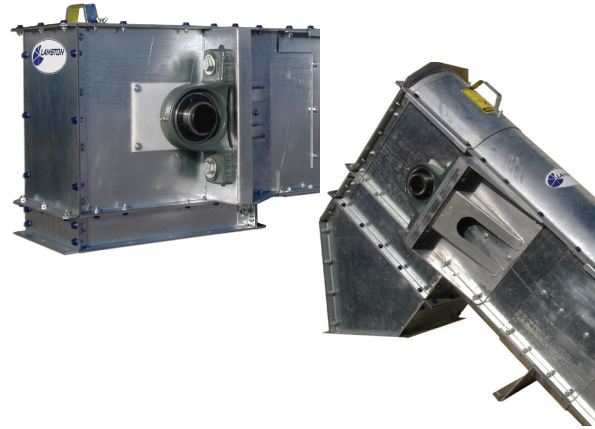
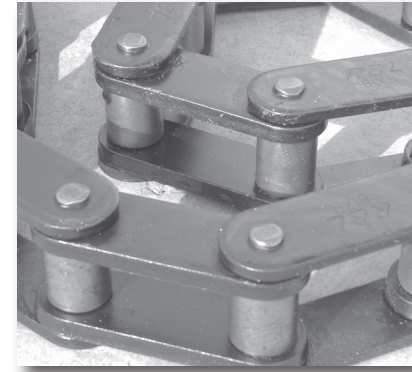
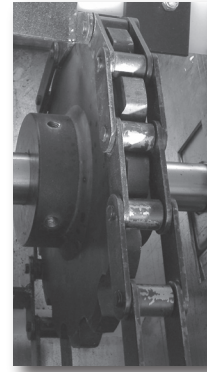
Lambton is a trademark of Lambton Conveyor Limited.

LDC070501



DRAG CONVEYORS

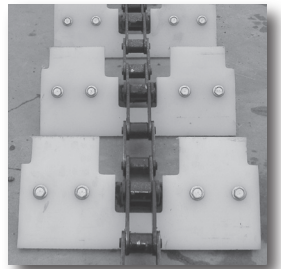
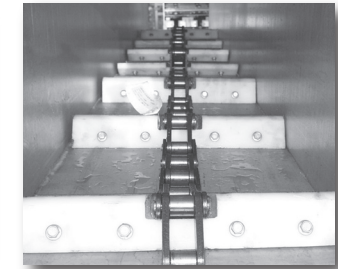
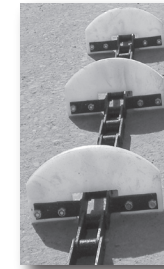
Chain sprockets for both the head and the tail are flame cut or cast from high grade steel to ensure reliability in material movement.



Head Features:

- Computer aided modular bolt together design
- CNC manufactured
- 10-8-5 gauge standard galvanized construction
- Heavy duty pillow block bearings
- Heavy duty drive sprocket
- Removable inspection cover
- Dust seals

The steel chain is 81x and 81xH 24,000 and 44,000 lb. average ultimate strength. Welded channel attachments add rigid support for paddles. In larger capacity or long conveyors dual chains are used. Paddles are 1/2" thick UHMW CNC manufactured for accuracy. UHMW prevents metal to metal contact reducing HP requirements and increasing conveyor life.



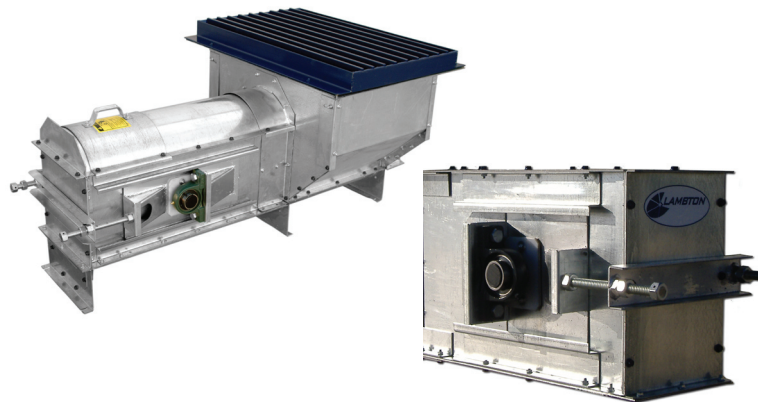
Trough features:

- Computer aided modular bolt together design
- CNC manufactured
- 10 gauge galvanized sides
- 10-8-5 gauge galvanized bottoms available
- UHMW return rollers
- Pre-assembled trunk sections
- Optional abrasion resistant steel liners for bottom and sides



Lambton Drag Hoppers come standard with adjustable flow gates that control the feeding capacity of the conveyor. Standard hopper lengths are 4, 8 and 12 feet in length.

* Custom Lengths Available *

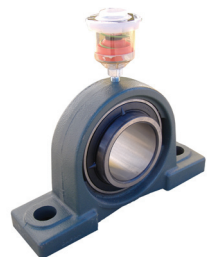


Tail Features:

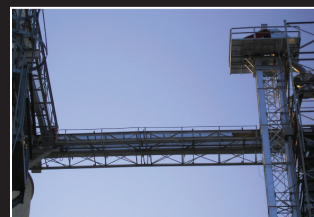
- Computer aided modular bolt together design
- CNC Manufactured
- 10-8-5 gauge standard galvanized construction
- Heavy duty pillow block bearings
- Heavy duty sprocket
- Acme screw slack adjusters
- Removable inspection covers
- Dust seals

Manway and Conveyor Catwalks:

- Manway and Conveyor Catwalks are designed to fit all conveyors.
- 24" standard walkway width
- Support towers are produced with same precision and rigidity as the Manway Catwalks that they support.
- X-Brace trussing is an available option for all Manway Catwalks, as is a Truss and Guy wire kit. (not shown)



The head and boot sections of the Lambton drag conveyor comes complete with long lasting roller bearings, with optional auto grease. Auto grease ensures your drag operates with the proper amount of lubrication at all times.



1247 FLORENCE RD. FLORENCE, ON. CANADA, N0P 1R0 Ph: 1.888.239.9713 Fx: 1.519.695.2529
<http://www.lambtonconveyor.com> email: sales@lambtonconveyor.com

China Branch: Ph: +86 371 67507165 Fx: +86 371 67993709



FLAT BOTTOM INCLINE CONVEYORS

Head Features:

- Computer aided modular bolt together design
- CNC manufactured
- 10-8-5 gauge standard galvanized construction
- Heavy duty pillow block bearings
- Heavy duty drive sprocket
- Removable inspection cover
- Dust seals

Trough features:

- Computer aided modular bolt together design
- CNC manufactured
- 10 gauge galvanized sides
- 10-8-5 gauge galvanized bottoms available
- Pre-assembled trunk sections
- Optional abrasion resistant steel liners for bottom and sides

Tail Features:

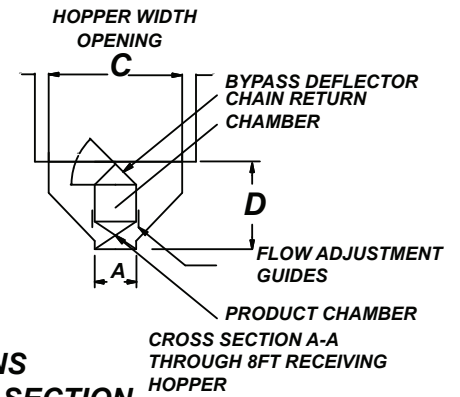
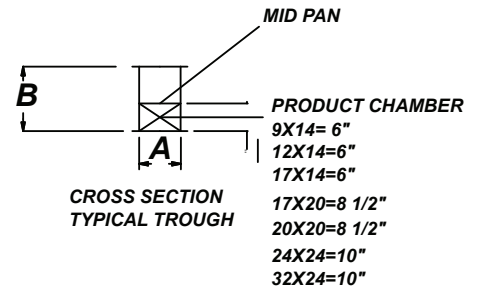
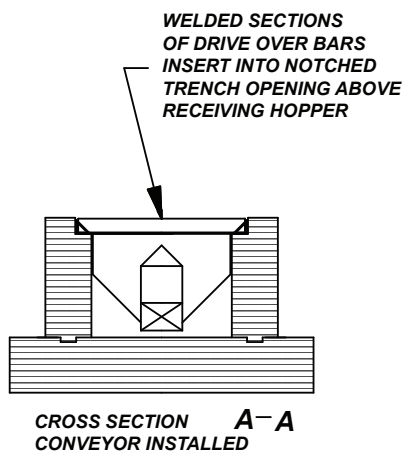
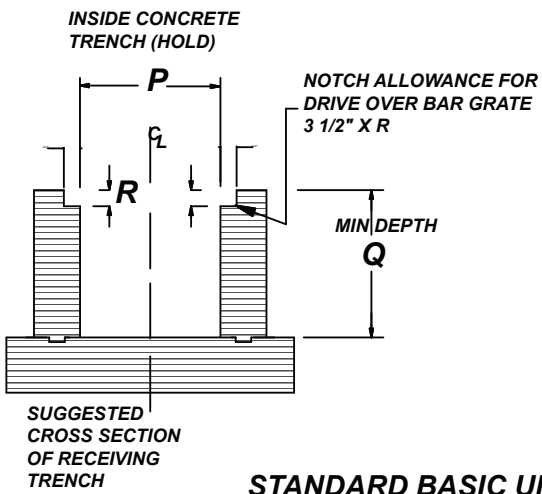
- Computer aided modular bolt together design
- CNC Manufactured
- 10-8-5 gauge standard galvanized construction
- Heavy duty pillow block bearings
- Heavy duty sprocket
- Acme screw slack adjusters
- Removable inspection covers
- Dust seals

FLAT BOTTOM INCLINE CONVEYORS



BPH	Drag Size	RPM	FPM
1,000	GLID-09X14	34	74
1,500	GLID-09X14	51	110
2,100	GLID-09X14	71	154
2,500	GLID-09X14	85	185
3,100	GLID-12X14	69	155
3,400	GLID-12X14	78	170
3,900	GLID-12X14	90	195
4,000	GLID-17X20	29	99
5,000	GLID-17X20	36	124
6,000	GLID-17X20	43	149
7,000	GLID-17X20	50	174
7,000	GLID--24X24	26	106
8,000	GLID--24X24	29	121
9,000	GLID--24X24	33	134
10,000	GLID--24X24	37	152
10,000	GLID--32X24	27	110
12,500	GLID--32X24	33	138
15,000	GLID--32X24	40	165

	9X14	12X14	17X20	24X24	32X24
A	9	12	17	24	32
B	14	14	20	24	24
C	29 ⁷ / ₈	32 ⁷ / ₈	41 ⁷ / ₈	51 ⁷ / ₈	59 ⁷ / ₈
F	68	68	73	78	78
G	120	120	120	120	120
H	60	60	60	60	60
J	20	20	20	30	30
K	3 1/2	3 1/4	3 3/8	3 1/2	3 1/2
L	36	36	36	46	46
M	252	252	260	265	295
P	30	33	42	52	60
Q	26	26	34	41	45

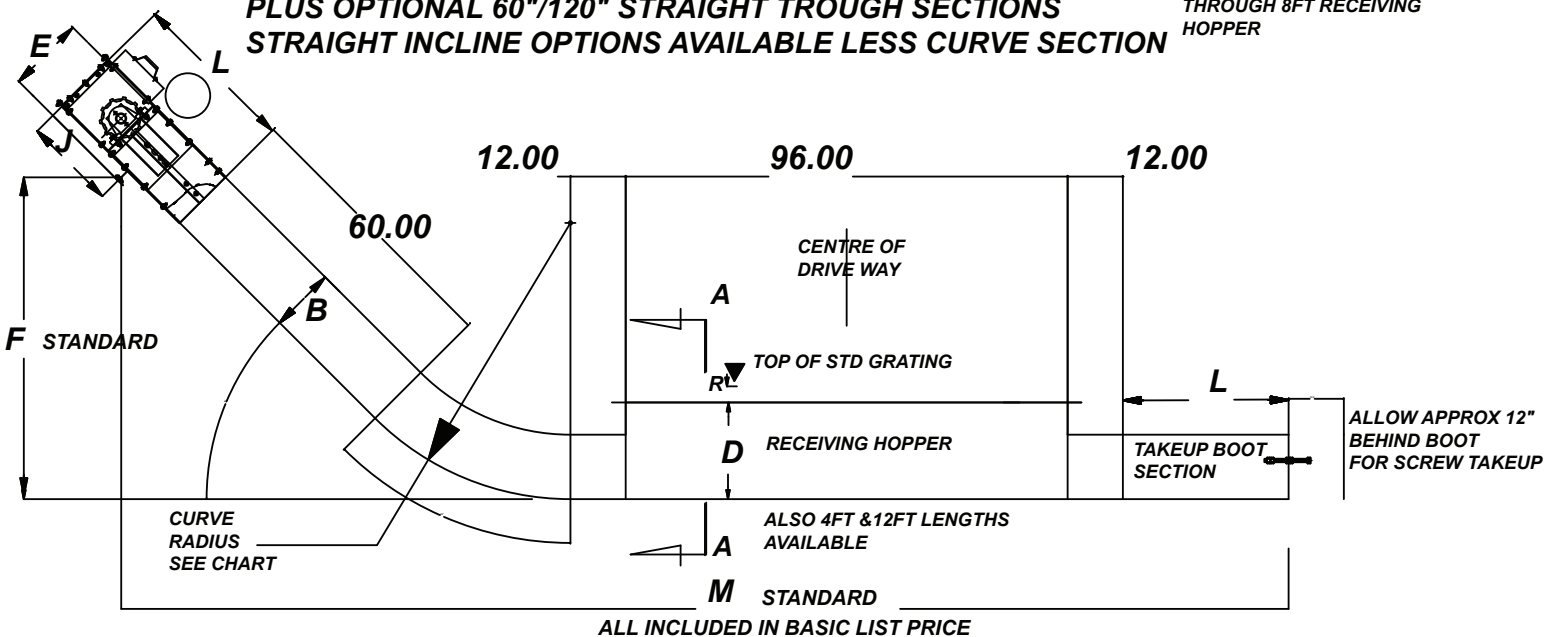


STANDARD BASIC UNIT LENGTH PLUS OPTIONAL 60\"/>

ANGLE OF CURVE CAN BE ADJUSTED IN 5 DEGREE INCREMENTS UP TO 50 DEGREE

CENTRE PAN THROUGH FULL LENGTH OF CONVEYOR PLUS OPTIONAL 60\"/>

HEAD SECTION R/H OR L/H DRIVE OPTIONS



FLAT BOTTOM LEVEL CONVEYORS

Head Features:

- Computer aided modular bolt together design
- CNC manufactured
- 10-8-5 gauge standard galvanized construction
- Heavy duty pillow block bearings
- Heavy duty drive sprocket
- Removable inspection cover
- Dust seals

Trough features:

- Computer aided modular bolt together design
- CNC manufactured
- 10 gauge galvanized sides
- 10-8-5 gauge galvanized bottoms available
- UHMW return rollers
- Pre-assembled trunk sections
- Optional abrasion resistant steel liners for bottom and sides

Tail Features:

- Computer aided modular bolt together design
- CNC Manufactured
- 10-8-5 gauge standard galvanized construction
- Heavy duty pillow block bearings
- Heavy duty sprocket
- Acme screw slack adjusters
- Removable inspection covers
- Dust seals

FLAT BOTTOM LEVEL CONVEYORS

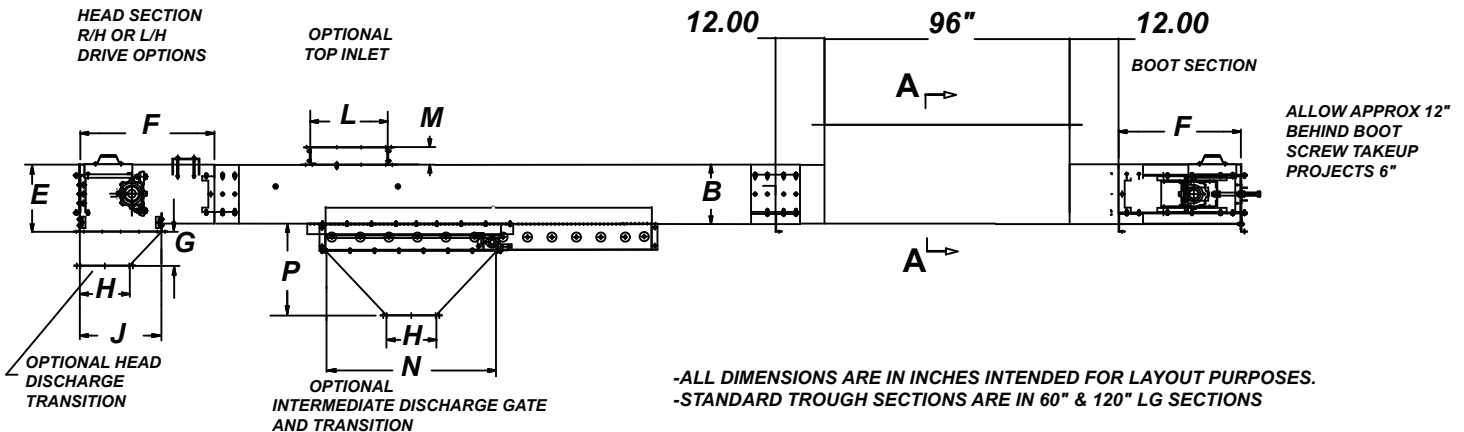
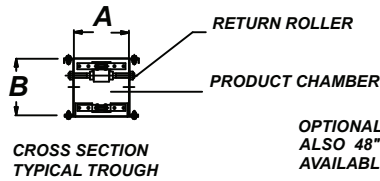
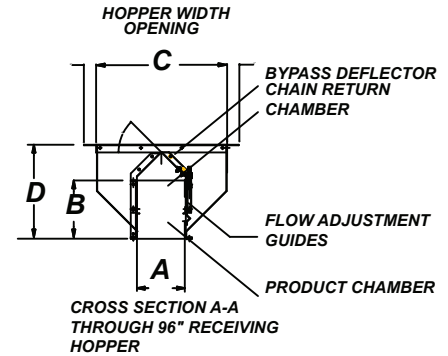
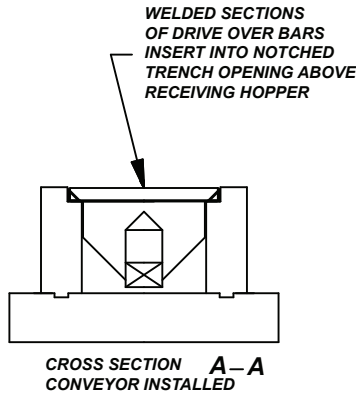
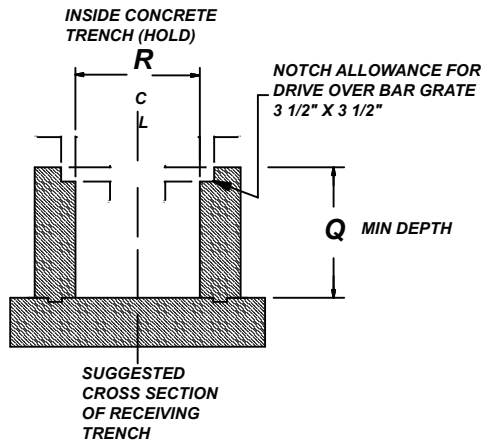
1247 FLORENCE RD. FLORENCE, ON. CANADA, N0P 1R0 Ph:1.888.239.9713 Fx: 1.519.695.2529
<http://www.lambtonconveyor.com> email: sales@lambtonconveyor.com

China Branch: Ph: +86 371 67507165 Fx: +86 371 67993709



BPH	Drag Size	RPM	FPM
1,000	GLD-09X9-37	37	64
1,500	GLD-09X9-55	55	95
2,000	GLD-09X9-74	74	128
2,500	GLD-09X9-92	92	160
3,000	GLD-09X9-109	109	189
3,000	GLD-09X17-31	31	95
3,000	GLD-13X11-49	49	106
4,000	GLD-13X11-65	65	141
5,000	GLD-13X11-81	81	176
4,000	GLD-09X17-41	41	126
5,000	GLD-09X17-51	51	158
6,000	GLD-09X17-61	61	189
6,000	GLD-12X17-46	46	142
7,000	GLD-12X17-54	54	165
8,000	GLD-12X17-61	61	189
8,000	GLD-16X17-46	46	145
9,000	GLD-16X17-52	52	160
10,000	GLD-16X17-57	57	177
10,000	GLD-16X20-38	38	181
13,000	GLD-16X20-50	50	174
14,000	GLD-16X20-54	54	188
15,000	GLD-16X20-58	58	202
11,000	GLD-16X20-42	42	146
12,000	GLD-16X20-46	46	160
15,000	GLD-20X20-47	47	193
16,000	GLD-20X20-50	50	174
17,000	GLD-20X20-53	53	184
18,000	GLD-20X20-56	56	195
19,000	GLD-20X20-59	59	205

	9X9	9X17	12X17	13X11	16X17	16X20	20X20
A	9	9	12	13	16	16	20
B	9	17	17	11	17	20	20
C	30 ⁷ / ₈	30 ⁷ / ₈	30 ⁷ / ₈	30 ⁷ / ₈	30 ⁷ / ₈	30 ⁷ / ₈	30 ⁷ / ₈
D	25 ¹ / ₂	25 ¹ / ₂	27	25 ¹ / ₂	27	30	30
E	9 ¹ / ₄	17 ¹ / ₄	17 ¹ / ₄	15 ¹ / ₄	17 ¹ / ₄	20 ¹ / ₄	20 ¹ / ₄
F	24	30	30	24	30	36	36
G	9	8	8	6	8	8	8
H	9	12	12	10	16	20	20
J	16	20	20	16	20	24	24
L	19	19	19	20	19	19	19
M	3 ¹ / ₂	3 ¹ / ₂	3 ¹ / ₂	3 ¹ / ₂	3 ¹ / ₂	3 ¹ / ₂	3 ¹ / ₂
N	36	36	36	36	36	36	36
P	13 ¹ / ₂	13 ¹ / ₂	13 ¹ / ₂	14 ¹ / ₂	11 ¹ / ₂	11 ¹ / ₂	11 ¹ / ₂
Q	29	29	30 ¹ / ₂	NA	30 ¹ / ₂	33 ¹ / ₂	33 ¹ / ₂
R	31	31	31	NA	31	31	31



FLAT BOTTOM LOW PROFILE CONVEYORS

Head Features:

- Computer aided modular bolt together design
- CNC manufactured
- 10-8-5 gauge standard galvanized construction
- Heavy duty pillow block bearings
- Heavy duty drive sprocket
- Removable inspection cover
- Dust seals

Trough features:

- Computer aided modular bolt together design
- CNC manufactured
- 10 gauge galvanized sides
- 10-8-5 gauge galvanized bottoms available
- UHMW return rollers
- Pre-assembled trunk sections
- Optional abrasion resistant steel liners for bottom and sides

Tail Features:

- Computer aided modular bolt together design
- CNC Manufactured
- 10-8-5 gauge standard galvanized construction
- Heavy duty pillow block bearings
- Heavy duty sprocket
- Acme screw slack adjusters
- Removable inspection covers
- Dust seals

FLAT BOTTOM LOW PROFILE CONVEYORS



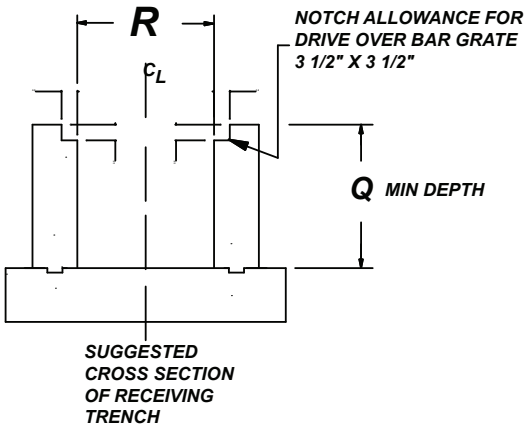
1247 FLORENCE RD. FLORENCE, ON. CANADA, N0P 1R0 Ph:1.888.239.9713 Fx: 1.519.695.2529
<http://www.lambtonconveyor.com> email: sales@lambtonconveyor.com

China Branch: Ph: +86 371 67507165 Fx: +86 371 67993709

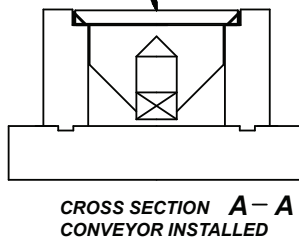
BPH	DRAG SIZE	RPM	FPM
1,000	GLD-09x9	37	64
1,500	GLD-09x9	55	95
2,000	GLD-09x9	74	128
2,500	GLD-09x9	92	160
3,000	GLD-09x9	109	189
3,000	GLD-13x11	49	106
4,000	GLD-13x11	65	141
5,000	GLD-13x11	81	176
5,500	GLD-16x11	70	154
6,000	GLD-16x11	76	176
6,500	GLD-16x11	81	181
7,000	GLD-16x11	88	195

	9X9	13X11	16X11
A	9	13	13
B	9	11	11
C	31	31	31
D	25.5	25.5	25.5
E	9.25	11.25	11.25
F	24	24	24
G	9	6	9
H	9	10	12
J	13	16	16
L	19	20	20
M	3.5	3.5	3.5
N	36	36	36
P	20	20	20
Q	30	30	30
R	32	32	32

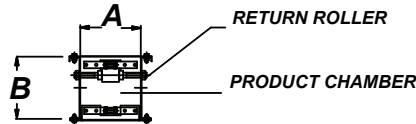
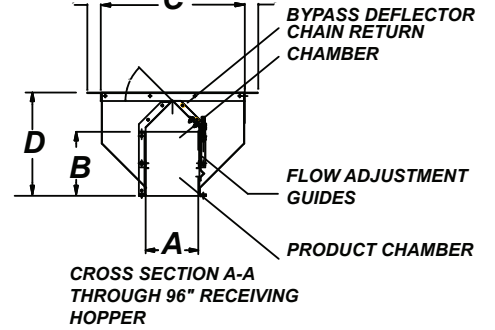
INSIDE CONCRETE TRENCH (HOLD)



WELDED SECTIONS OF DRIVE OVER BARS INSERT INTO NOTCHED TRENCH OPENING ABOVE RECEIVING HOPPER



HOPPER WIDTH OPENING



OPTIONAL RECEIVING HOPPER 96" ALSO 48" & 144" LENGTHS AVAILABLE

HEAD SECTION R/H OR L/H DRIVE OPTIONS

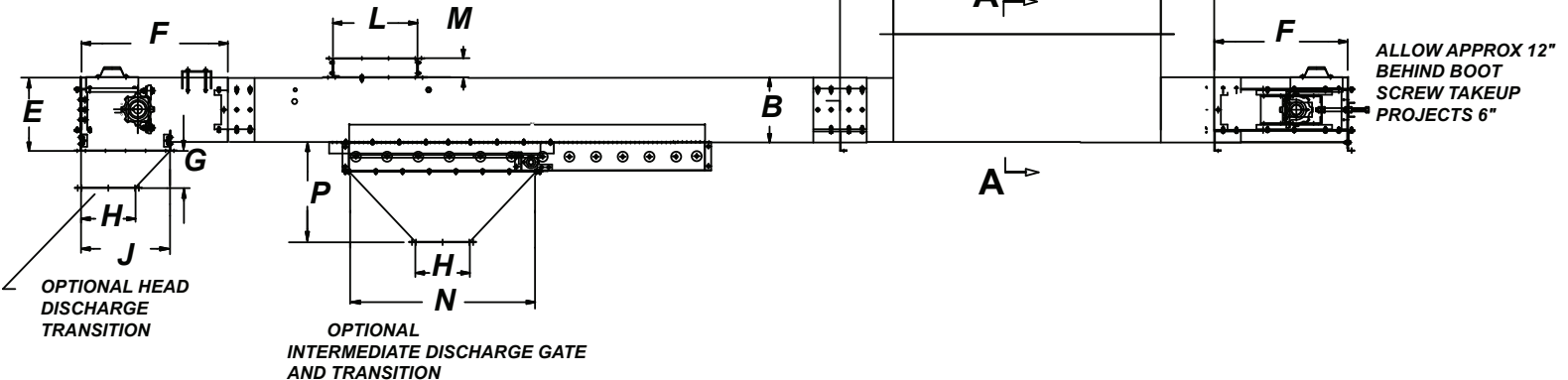
OPTIONAL TOP INLET

12.00

96"

12.00

BOOT SECTION



ROUND BOTTOM LEVEL CONVEYORS

Head Features:

- Computer aided modular bolt together design
- CNC manufactured
- 10-8-5 gauge standard galvanized construction
- Heavy duty pillow block bearings
- Heavy duty drive sprocket
- Removable inspection cover
- Dust seals

Trough features:

- Computer aided modular bolt together design
- CNC manufactured
- 10 gauge galvanized sides
- 10-8-5 gauge galvanized bottoms available
- UHMW return rollers
- Pre-assembled trunk sections
- Optional abrasion resistant steel liners for bottom and sides

Tail Features:

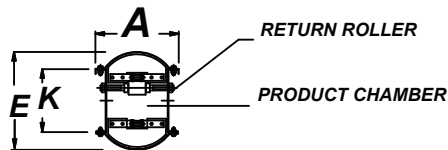
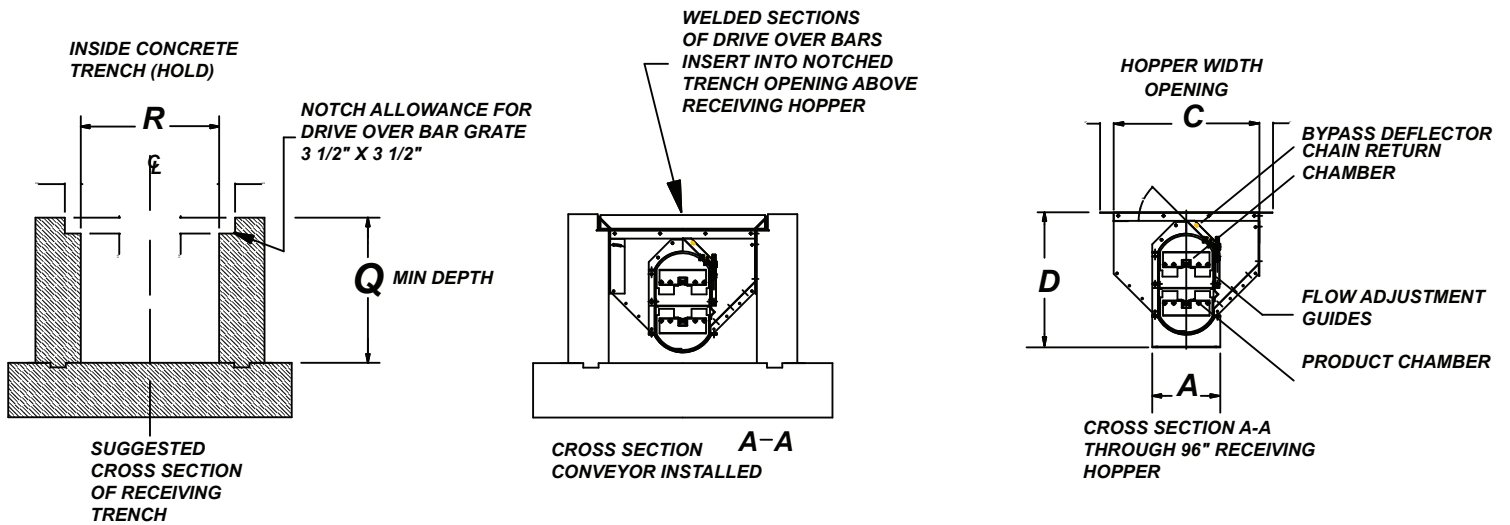
- Computer aided modular bolt together design
- CNC Manufactured
- 10-8-5 gauge standard galvanized construction
- Heavy duty pillow block bearings
- Heavy duty sprocket
- Acme screw slack adjusters
- Removable inspection covers
- Dust seals

ROUND BOTTOM LEVEL CONVEYORS



BPH	DRAG SIZE	RPM	FPM
1,000	GLR-09X9	37	64
1,500	GLR-09X9	55	95
2,000	GLR-09X9	74	128
2,500	GLR-09X9	92	160
3,000	GLR-09X9	109	189
3,000	GLR-09X17	31	95
4,000	GLR-09X17	41	126
5,000	GLR-09X17	51	158
6,000	GLR-09X17	61	189
6,000	GLR-12x17	46	142
7,000	GLR-12x17	54	165
8,000	GLR-12x17	61	189
8,000	GLR-16x17	46	145
9,000	GLR-16x17	52	160
10,000	GLR-16x17	57	177

	9X9	9 X 17	12 X 17	16 X 17
A	12	12	15	19
B	18 7/8	26 7/8	30 3/4	30 3/4
C	30	30	30	30
D	20 5/8	3 1	34	33 1/8
E	11 7/8	22 3/4	25 3/8	27 1/2
F	34 1/2	34 1/2	35 1/2	37
H	12	12	12	16
J	20	20	24	25 1/2
K	9 1/4	17 1/4	17 1/4	17 1/4
L	19	19	19	19
M	4 1/4	4 1/4	6	6
N	42	42	42	42
P	22 3/8	22 3/8	25	25
Q	29	36	41	41
R	33	33	33	33



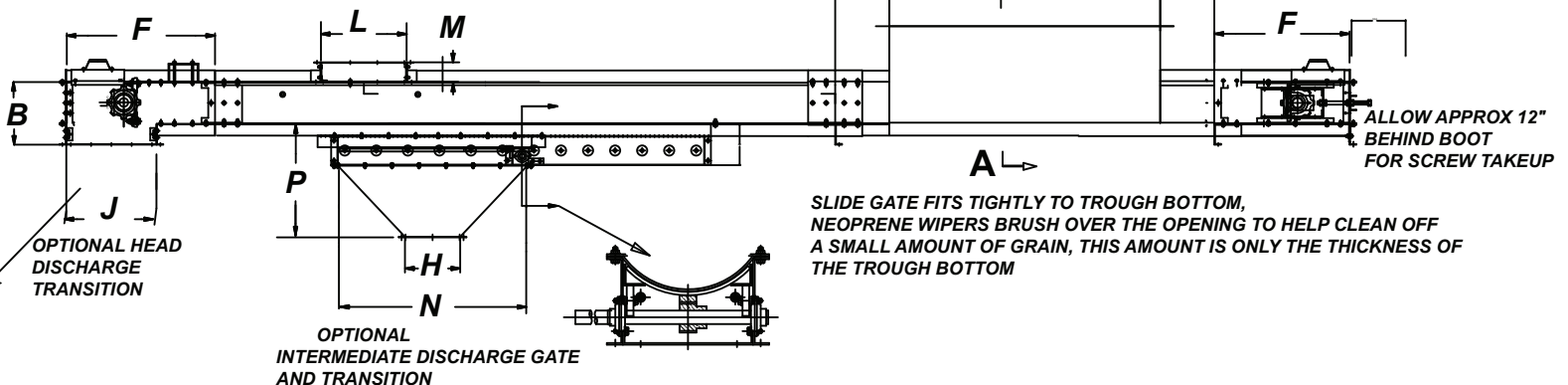
**OPTIONAL RECEIVING HOPPER 96"
ALSO 24", 48" & 144" LENGTHS
AVAILABLE**

CROSS SECTION
TYPICAL TROUGH

HEAD SECTION
R/H OR L/H
DRIVE OPTIONS

OPTIONAL
TOP INLET

12.00 96" 12.00



SLIDE GATE FITS TIGHTLY TO TROUGH BOTTOM,
NEOPRENE WIPERS BRUSH OVER THE OPENING TO HELP CLEAN OFF
A SMALL AMOUNT OF GRAIN, THIS AMOUNT IS ONLY THE THICKNESS OF
THE TROUGH BOTTOM

ROUND BOTTOM INCLINE CONVEYORS

Head Features:

- Computer aided modular bolt together design
- CNC manufactured
- 10-8-5 gauge standard galvanized construction
- Heavy duty pillow block bearings
- Heavy duty drive sprocket
- Removable inspection cover
- Dust seals

Trough features:

- Computer aided modular bolt together design
- CNC manufactured
- 10 gauge galvanized sides
- 10-8-5 gauge galvanized bottoms available
- Pre-assembled trunk sections
- Optional abrasion resistant steel liners for bottom and sides

Tail Features:

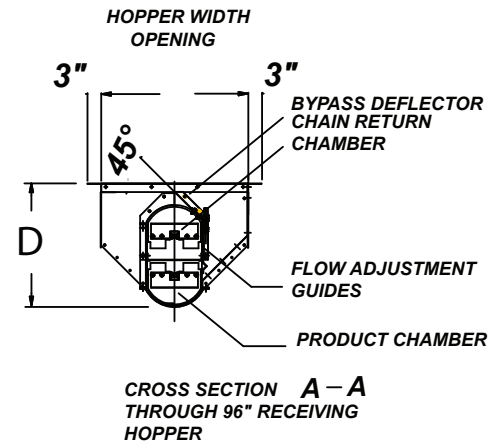
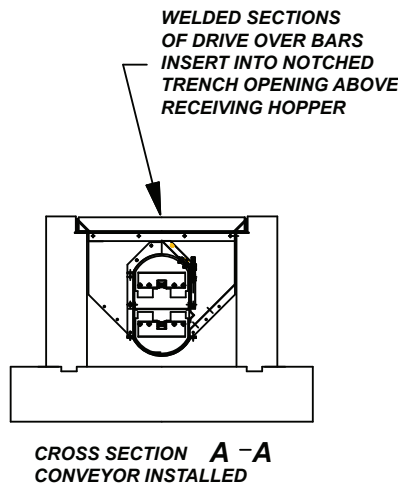
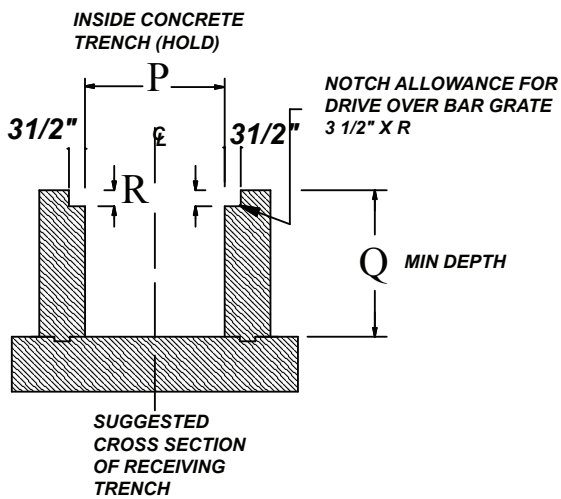
- Computer aided modular bolt together design
- CNC Manufactured
- 10-8-5 gauge standard galvanized construction
- Heavy duty pillow block bearings
- Heavy duty sprocket
- Acme screw slack adjusters
- Removable inspection covers
- Dust seals

ROUND BOTTOM INCLINE CONVEYORS



BPH	DRAG SIZE	RPM	FPM
1,000	GLID-09x14	34	74
1,500	GLID-09x14	54	110
2,100	GLID-09x14	71	154
2,500	GLID-09x14	85	185
3,100	GLID-12x14	69	155
3,400	GLID-12x14	78	170
3,900	GLID-12x14	90	195
4,000	GLID-17x20	29	99
5,000	GLID-17x20	36	124
6,000	GLID-17x20	43	149
7,000	GLID-17x20	50	174
7,000	GLID-24X24	26	106
8,000	GLID-24X24	29	121
9,000	GLID-24X24	33	134
10,000	GLID-24X24	37	152

	9X14	12 X 14	17 X 14	17 X 20	24 X 24
Radius	62"	64"	72"	78"	78"
A	9"	12"	17"	17"	24"
B	14"	14"	14"	20"	24"
C	29"	32"	41"	41"	51"
D	25.5"	30"	35"	41"	
E	19.3"	22"	27"	33"	
F	72.5"	75"	74"	79"	
G	21.3"	23.5"	30"		
J	20"	20"	23"	30"	
L	36"	37.5"	37.5"	44"	
M	257"	257"	262"	273"	
P	30.5"	33.5"	42.5"	42.5"	
Q	36"	36"	42"	48"	
R	3.5"	3.5"	3.5"	3.5"	
S	36"	37.5"	37.5"	45.5"	

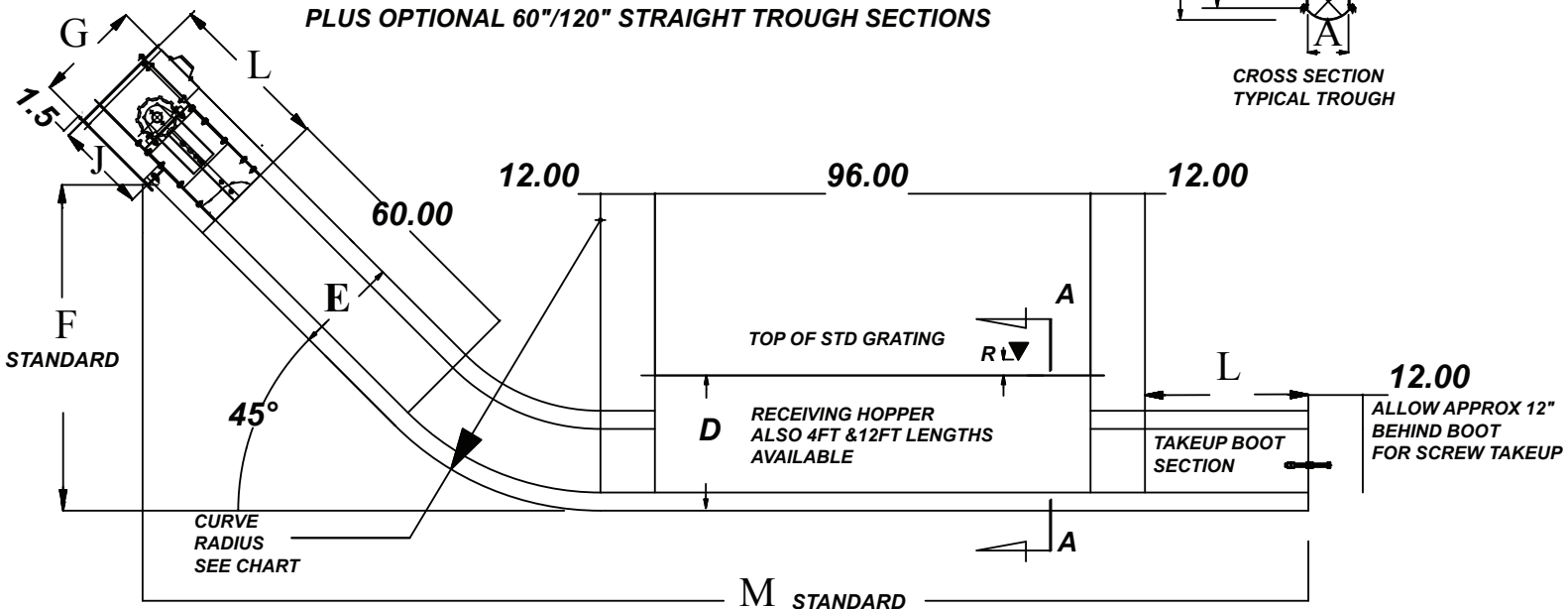
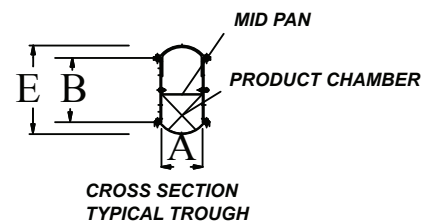


STANDARD BASIC UNIT LENGTH PLUS OPTIONAL 60"/120" STRAIGHT LENGTHS

ANGLE OF CURVE CAN BE ADJUSTED IN 5 DEGREE INCREMENTS UP TO 50 DEGREE

HEAD SECTION R/H OR L/H DRIVE OPTIONS

CENTRE PAN THROUGH FULL LENGTH OF CONVEYOR PLUS OPTIONAL 60"/120" STRAIGHT TROUGH SECTIONS



ALL INCLUDED IN BASIC LIST PRICE