

The Right Dryer For The Job

DRYERS



Grain Quality You Can Bank On

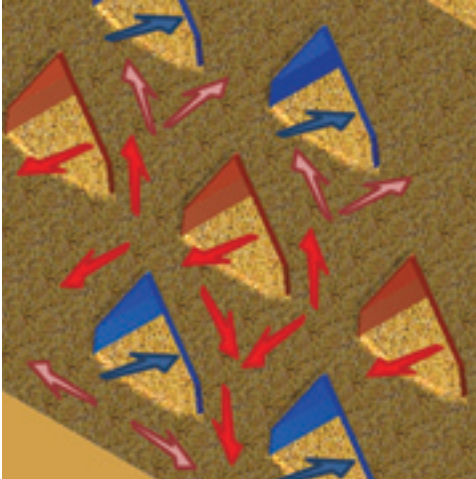


1.800.367.6208 | necousa.com
A Division of GLOBAL Industries, Inc.



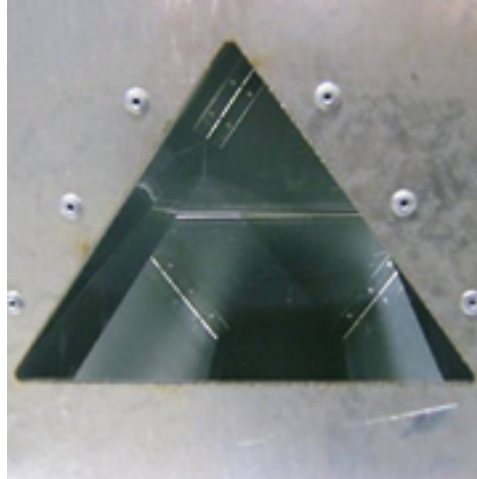


Leading the Industry in Efficiency and Innovation



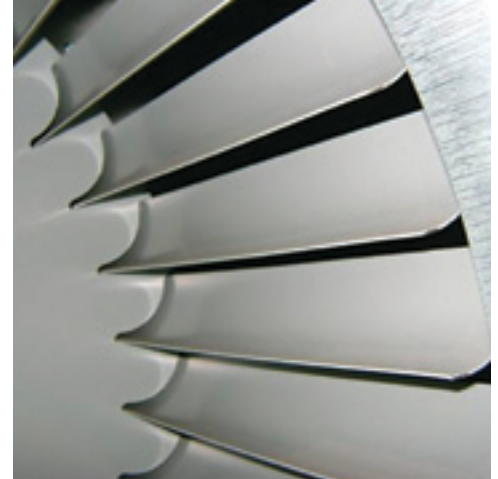
Mixed Flow

- Preserves grain quality
- Kernel to kernel consistency
- Even heating & cooling



Screenless

- No screens to clean
- No screens to change
- No screens to clog
- Switch grain types easily and quickly



Quiet & Efficient

- Energy efficient
- Blower wheel has curved forward blades
- Quiet source of air flow
- High air flow at low speeds



Designed for Performance and Versatility



Modular

- Easy installation
- Expandable system
- Customizable



Reliable Safety

- Flame safety relay
- Accuracy of ignition
- Safety for you & your grain

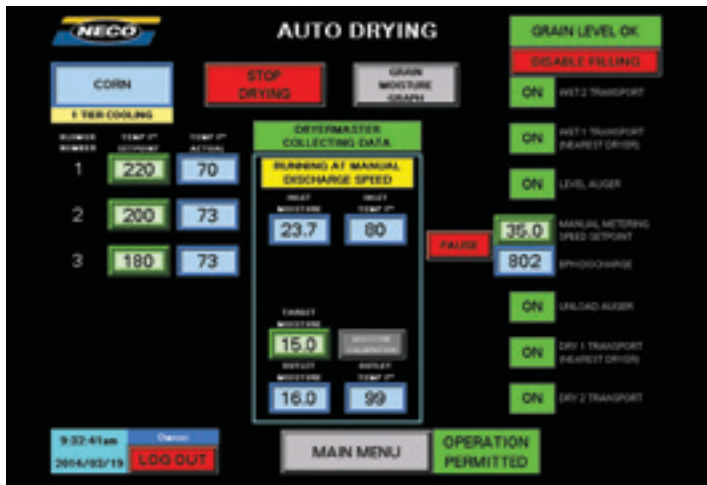


Flexible Operations

- Multiple burner dryer
- Ultimate section control
- Run in all heat, dry & cool, steeping or sweating sections, multiple burner temps., etc



Dryer Control You Can Rely On



COMMANDER Control

- Embedded Dryer Master™ moisture control
- Dual moisture sensing system
- Tracking & graph capabilities
- Alarm & troubleshooting assistance



COMMANDnet (Optional)

- Control in the palm of your hand
- Easily connect through any device with a web browser (tablet, smart phone, laptop)
- Cellular gateway technology
- Manage the dryer operation remotely
- Receive alarm callouts via text or e-mail



Committed to Customer Satisfaction



Knowledge & Service

- Hands on technical dryer service training
- Experienced technical support
- Parts available in six strategically located warehouses
- Each dryer section factory tested
- Comprehensive quality inspections conducted on all NECO products before shipping to insure long-term efficient and problem-free operation

Dryer Model	Corn						Wheat		Rice	Technical Specifications								
	Number of Tiers	Holding Capacity	5 Pts All Heat 210°F	10 Pts All Heat 210°F	5 Pts Dry & Cool 210°F	10 Pts Dry & Cool 210°F	5 Pts All Heat 210°F	5 Pts Dry & Cool 210°F	Rice 4 Pts All Heat	Number Blowers	Total CFM of Blowers (CFM)	Max Burner Output (MMBTU/Hr)	Max Unload (BPH)	Total HP of Blowers (HP)	Total HP of All Motors (HP)	Fill Height-Level Auger (FT)	Fill Height-Gravity Fill (FT)	Overall Length (FT)
12' Dryers																		
D1240	4	493	400	214	343	180	383	327	374	1	15,000	6.0	736	15	18	17.2	18	20
D1250	5	505	471	250	345	222	449	323	440	1	17,500	6.0	736	15	18	19.2	20	20
D1260	6	578	554	295	441	270	542	426	519	1	20,000	6.0	736	15	18	21.2	22	20
16' Dryers																		
D1670	5	674	631	336	463	298	621	446	591	1	23,500	6.0	982	20	23	19.2	21.2	24
D1680	6	770	740	393	589	361	714	561	692	1	27,500	6.0	982	20	24	21.2	23.2	24
D1690	7	866	860	457	720	372	833	691	804	1	32,000	6.0	982	25	29	23.2	25.2	24
D16106	8	962	981	522	851	443	1003	863	918	2	36,000	12.0	1527	30	34	25.2	27.2	27
D16120	10	1155	1250	667	1037	596	1240	1017	1169	2	47,000	12.0	1527	40	46	29.2	31.2	27
D16140	12	1347	1468	782	1277	721	1426	1233	1373	2	55,000	12.0	1527	40	46	33.2	35.2	27
D16160	14	1539	1732	924	1458	815	1740	1454	1620	3	65,000	18.0	2255	55	61	37.2	39.2	27
24' Dryers																		
D24108	6	1155	1109	589	883	541	1084	851	1037	2	41,200	12.0	1473	30	36	21.2	25.9	35
D24150	8	1443	1474	784	1279	665	1427	1230	1379	2	55,000	12.0	1473	40	50	25.2	27.9	35
D24180	10	1732	1687	891	1398	797	1667	1369	1578	2	62,000	15.0	2291	50	65	29.2	33.9	35
D24210	12	2020	2201	1173	1916	1082	2139	1850	2059	3	82,500	18.0	2291	60	75	33.2	37.9	35
D24240	14	2309	2428	1284	2061	1142	2380	2002	2271	3	89,500	21.0	3382	70	85	37.2	41.9	35
D24260	16	2597	2928	1560	2553	1415	2851	2470	2739	4	110,000	24.0	3382	80	100	41.2	45.9	35
D24330	20	3174	3357	1775	2931	1668	3332	2893	3140	5	124,000	30.0	4527	100	120	49.2	53.9	35
D24380	24	3750	4098	2167	3594	2013	4045	3524	3833	6	151,500	36.0	4527	120	150	55.2	61.9	35
32' Dryers																		
D32260	12	2693	2647	1399	2499	1275	2542	2202	2305	3	108,000	22.5	4509	90	110	33.2	40.6	43
D32340	16	3463	3521	1862	3129	1565	3389	2941	3179	4	144,000	30.0	4509	120	140	41.2	48.6	43
D32440	20	4232	4394	2324	4071	2061	4235	3679	4052	5	180,000	37.5	6691	150	180	49.2	56.6	43
D32500	24	5001	5268	2786	4993	2552	5062	4418	4829	6	216,000	45.0	6691	180	200	57.2	64.6	43

Product Disclaimer: 1. Drying capacities represent NECO's best estimate of attainable wet bushel capacities based on a combination of actual field results and computer analysis. Capacities will vary depending on outside temperature, humidity, initial grain temperature, crop maturity and variety, cleanliness of the grain, test weight, operating temperature, drying vs. cooling zones, etc. 2. Grain discharged from the dryer hot will dry an additional 1.5% - 2% when properly cooled. 3. Fill height listed is for a dryer with a 48" standard leg kit.

NECO reserves the right to change its products and specifications at anytime without notice or obligation.



A Division of GLOBAL Industries, Inc.

9364 N. 45th Street : Omaha, NE 68152
 Phone: (402) 453-6912 : Fax: (402) 453-0471
 TOLL FREE: 1.800.367.6208
necousa.com | sales@necousa.com