

RAD

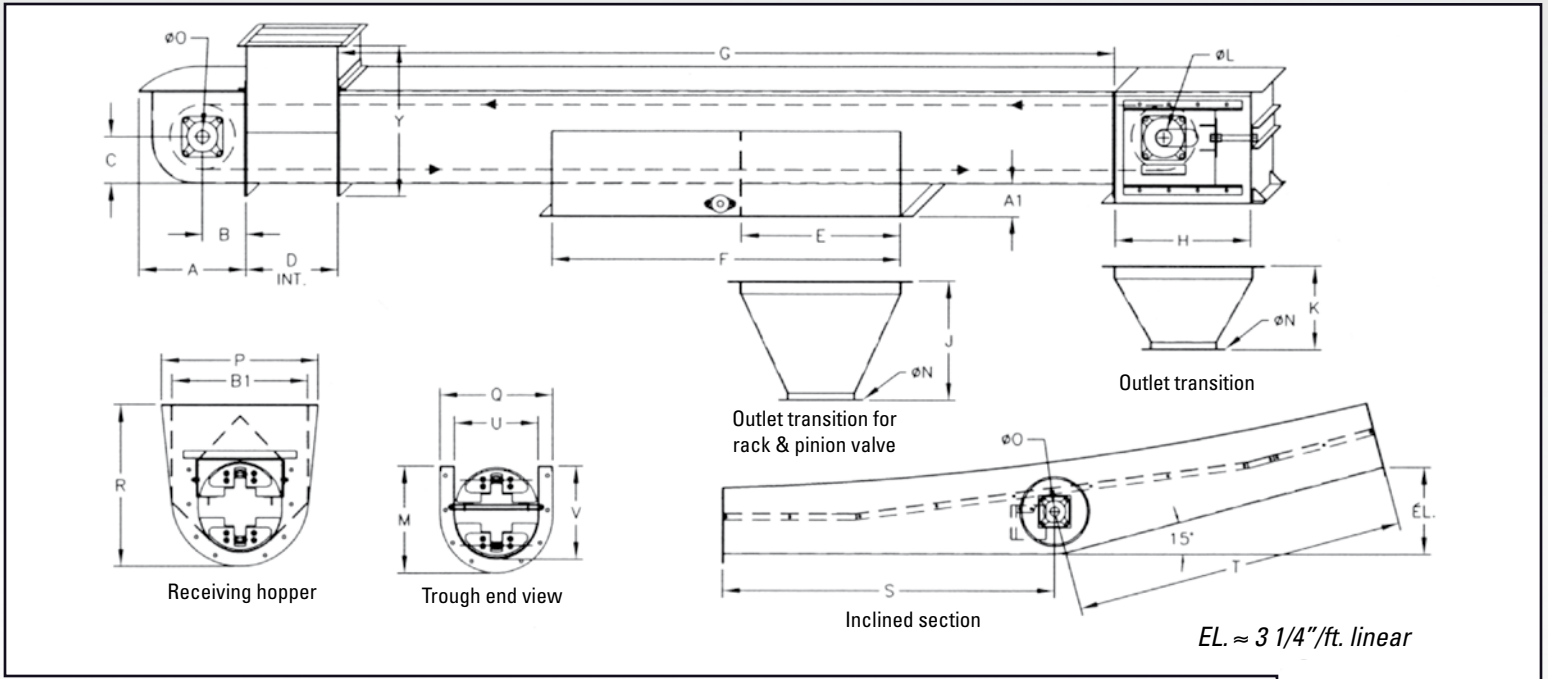


ROUNDED BOTTOM DRAG CONVEYOR

www.radeq.ca • info@radeq.ca

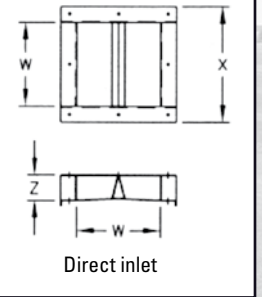
5490, Martineau Street, Saint-Hyacinthe (Québec) Canada J2R 1T8
Phone: (450) 796-2626 / Toll free: 1-888-796-2723 / Fax: (450) 796-1830

ROUNDED BOTTOM DRAG CONVEYOR



CONVEYOR DIMENSIONS

DIA.	A	B	C	D	E	F	G	H	J	K	L	M	N	O
6"	9-3/8"	3-3/4"	4"	10"	17-3/8"	41-1/2"	5' - 10'	18"	12-1/4"	12-3/4"	1-7/16"	9-3/8"	6"	1-1/4"
9"	12-1/2"	5"	5-5/8"	12"	23-3/8"	52"	5' - 10'	18-1/8"	19-1/8"	11-1/2"	1-15/16"	12-3/4"	8"	1-1/2"
12"	16-1/2"	6-3/4"	7-1/4"	14"	24-3/8"	53-3/4"	6' - 12'	21"	18-3/8"	13"	2-7/16"	16-3/8"	10"	2"
14"	19"	8"	8-1/2"	16"	27-3/8"	59-3/4"	6' - 12'	24"	19-5/8"	13-3/4"	2-3/4"	18-7/8"	12"	2-1/4"
16"	21-3/8"	9-1/8"	9-5/8"	16"	27-3/8"	59-3/4"	6' - 12'	24"	19-5/8"	13-5/8"	2-15/16"	21-1/4"	12"	2-3/4"
	P	Q	R	S	T	U	V	W	X	Y	Z	A1	B1	
6"	16-1/4"	9-3/4"	15"	-	-	7"	8-1/8"	7"	10"	13-5/8"	3"	5"	13"	
9"	21-1/4"	13-3/8"	20-1/8"	60"	60"	10"	11-1/4"	10"	13-3/4"	18-3/4"	3"	5"	18"	
12"	24-1/4"	17-1/2"	25"	72"	72"	13"	14-3/8"	13"	17-7/8"	23-1/4"	4"	5"	21"	
14"	27"	19-1/2"	29-1/8"	72"	72"	15"	16-7/8"	15"	20"	27-1/8"	4"	5"	24"	
16"	30-1/4"	21-5/8"	31-7/8"	72"	72"	17"	19-1/4"	17"	22"	30-3/8"	4"	5"	27"	



SPECIFICATIONS *

	6"	9"	12"	14"	16"
TAIL SECTION	12 GA	12 GA	12 GA	11 GA	10 GA
DIVIDED INLET	12 GA	12 GA	12 GA	11 GA	10 GA
TROUGH	14 GA	14 GA	12 GA	12 GA	12 GA
HEAD	12 GA	12 GA	12 GA	11 GA	10 GA
LID	16 GA	16 GA	14 GA	14 GA	14 GA
CHAIN	CA550	81X	81X	81X	81X
SPROCKET	10 Teeth	9 Teeth	12 Teeth	14 Teeth	16 Teeth
PADDLES THICKNESS	3/8"	3/8"	3/8"	3/8"	1/2"

Horsepower and capacities are based on horizontal conveying dry free flowing material weighing 45 lbs./cfh or 56 lbs/bhp. Horsepower and capacities may change for inclined conveyor or with other materials.

*Other specifications available on request.

CONVEYOR CAPACITIES

	RPM	BPH	CFH	HP/F	MAX. HP
6" @ 85 ft/min	62	600	750	0.012	2
@ 128 ft/min	92	900	1125	0.017	3
@ 170 ft/min	123	1200	1500	0.023	3
9" @ 83 ft/min	42	1200	1500	0.022	5
@ 104 ft/min	52	1500	1875	0.027	5
@ 167 ft/min	83	2400	3000	0.044	7.5
12" @ 99 ft/min	37	2400	3000	0.040	7.5
@ 123 ft/min	47	3000	3750	0.050	10
@ 144 ft/min	55	3500	4375	0.058	10
14" @ 108 ft/min	35	3500	4375	0.059	10
@ 123 ft/min	40	4000	5000	0.068	10
@ 154 ft/min	50	5000	6250	0.085	10
16" @ 120 ft/min	35	5000	6250	0.083	10
@ 135 ft/min	39	5600	7000	0.094	10
@ 154 ft/min	44	6400	8000	0.106	10

Dimensions and specifications are subject to change without notice.

MANUFACTURED BY: **RAD Équipments inc.**
 5490, Martineau Street
 St-Hyacinthe, Quebec, Canada J2R 1T8
 Phone: (450) 796-2626 1-888-796-2723
 Fax: (450) 796-1830
 E-mail: info@radeq.ca
 Internet: www.radeq.ca



DISTRIBUTED BY :