

RAD

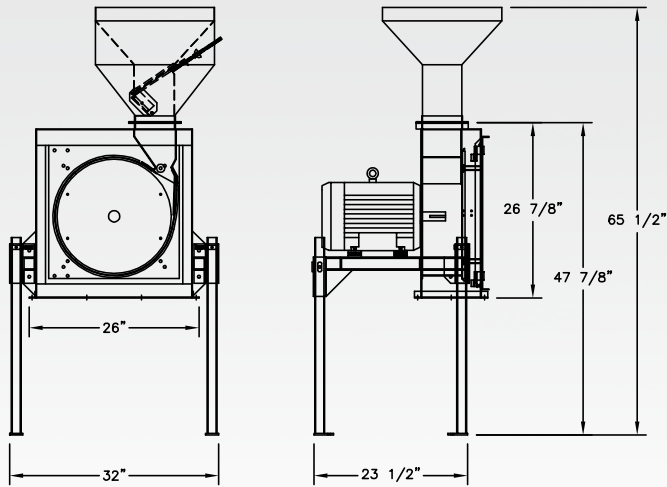


HAMMER MILL MX 1800 & MX 2000

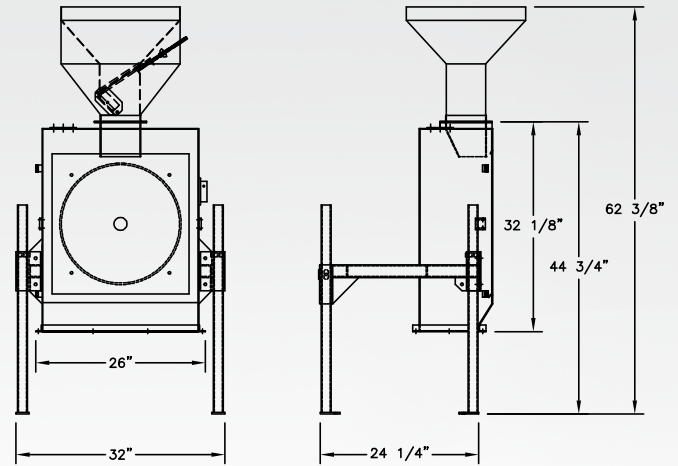
www.radeq.ca • info@radeq.ca

5490, Martineau Street, Saint-Hyacinthe (Québec) Canada J2R 1T8
Phone: (450) 796-2626 / Toll free: 1-888-796-2723 / Fax: (450) 796-1830

HAMMER MILL MX2000



HAMMER MILL MX1800



Screen size chart

	GRAIN	Screen size
Hog	Dry shelled corn	1/8", 5/32", 3/16", 1/4"
	Wet corn	1/4"
	Wheat, oats, barley	1/8", 5/32"
Dairy Cattle	Dry shelled corn	1/4", 5/16"
	Wet corn	3/8"
	Wheat, oats, barley	5/32"
Poultry	Dry shelled corn	3/16", 1/4"
	Wheat, oats	5/32"

Capacity in tons/hour based on grain and screen size

MOTOR SCREEN	7.5 H.P.			10 H.P.			15 H.P.		
	Corn	Wheat	Barley	Corn	Wheat	Barley	Corn	Wheat	Barley
1/16"	0.5	0.6	0.3	0.7	0.8	0.4	1.0	1.1	0.5
3/32"	0.8	0.9	0.4	1.1	1.2	0.6	1.7	1.9	0.9
1/8"	1.7	1.9	0.9	2.3	2.5	1.2	3.5	3.8	1.8
5/32"	2.1	2.3	1.1	2.8	3.1	1.4	4.2	4.6	2.1
3/16"	2.5		1.2	3.3		1.7	4.9		2.5
7/32"	2.8		1.4	3.7		1.9	5.6		2.8
1/4"	3.1		1.6	4.2		2.1	6.3		3.2
5/16"	3.8		1.9	5.1		2.6	7.7		3.9
3/8"	4.5			6.0			9.0		
1/2"	6.1			8.2			12.3		

Dimensions and specifications are subject to change without notice.

Unloading system:

- 3 1/2" or 5" flexible auger Fig. 1 & Fig. 2
- 4" or 6", horizontal, vertical or 45° inclined rigid auger. Fig. 1 & Fig. 2
- High moisture corn:
Discharge by 6" auger with full size hopper. Fig. 3

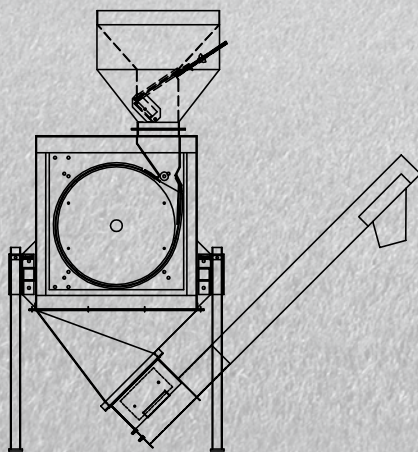


Fig. 1

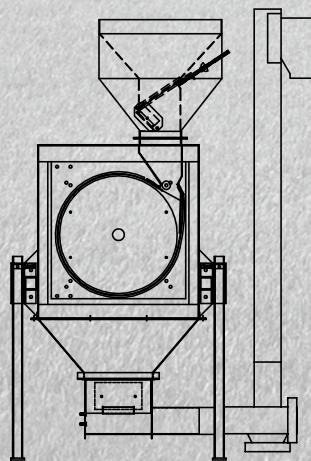


Fig. 2

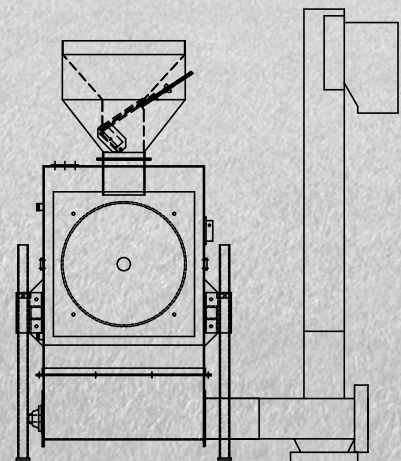


Fig. 3

MANUFACTURED BY:

RAD Équipements inc.
5490, Martineau Street
St-Hyacinthe, Quebec, Canada J2R 1T8
Phone: (450) 796-2626 1-888-796-2723
Fax: (450) 796-1830
E-mail: info@radeq.ca
Internet: www.radeq.ca

RAD

DISTRIBUTED BY :

RAD

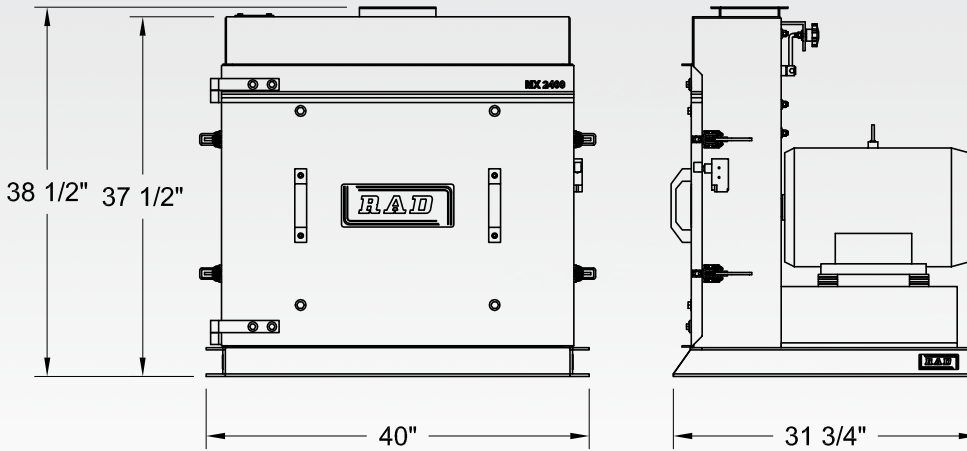


HAMMER MILL MX 2400

www.radeq.ca • info@radeq.ca

5490, Martineau Street, Saint-Hyacinthe (Québec) Canada J2R 1T8
Phone: (450) 796-2626 / Toll free: 1-888-796-2723 / Fax: (450) 796-1830

Hammer mill MX2400



Heavy high quality construction & design
 Heavy steel beater hub assembly
 Tempered steel hammer
 Heavy duty hinged mill door
 24" screen design
 High capacity milling
 20 to 30 HP 1750 RPM motor

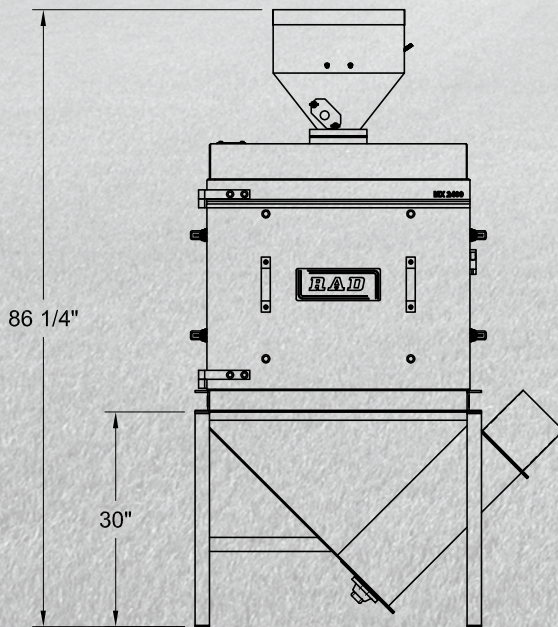
Screen size chart

	GRAIN	Screen size
Hog	Dry shelled corn	1/8", 5/32", 3/16", 1/4"
	Wet corn	1/4"
	Wheat, oats, barley	1/8", 5/32"
Dairy Cattle	Dry shelled corn	1/4", 5/16"
	Wet corn	3/8"
	Wheat, oats, barley	5/32"
Poultry	Dry shelled corn	3/16", 1/4"
	Wheat, oats	5/32"

Capacity in tons/hour based on grain and screen size

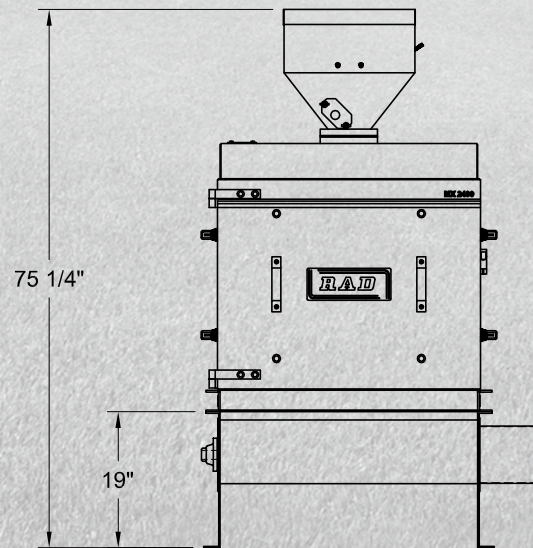
MOTOR SCREEN	20 H.P.			25 H.P.			30 H.P.		
	Corn	Wheat	Barley	Corn	Wheat	Barley	Corn	Wheat	Barley
1/16"	1.2	1.4	0.7	1.5	1.7	0.8	1.8	1.9	0.9
3/32"	1.9	2.1	1.1	2.6	2.7	1.4	3.0	3.3	1.6
1/8"	4.0	4.4	2.1	5.0	5.6	2.7	6.0	6.7	3.2
5/32"	4.9	5.4	2.5	6.2	6.7	2.9	7.4	8.0	3.7
3/16"	5.8		3.0	7.4		3.7	9.0		4.4
7/32"	6.5		3.3	8.2		4.1	9.8		4.9
1/4"	7.4		3.7	9.2		4.7	11.0		5.6
5/16"	8.9		4.6	11.2		5.7	13.5		6.8
3/8"	10.5			13.1			15.7		
1/2"	14.4			18.0			21.5		

Dimensions and specifications are subject to change without notice.



45° unloading hopper

For 6"Ø or 8"Ø auger



Horizontal unloading hopper

For 6"Ø or 8"Ø auger

MANUFACTURED BY: **RAD Équipements inc.**
 5490, Martineau Street
 St-Hyacinthe, Quebec, Canada J2R 1T8
 Phone: (450) 796-2626 1-888-796-2723
 Fax: (450) 796-1830
 E-mail: info@radeq.ca
 Internet: www.radeq.ca

DISTRIBUTED BY :